

TRAILER CARGO LIGHT WEIGHT, MC2  
REPLACEMENT OF STOP-TAIL LIGHT ASSEMBLY

MODIFICATION INSTRUCTION

Issue of this instruction is authorized by the CONMEA

Introduction

1. This instruction details the fitting of a new type stop-tail light assembly to the early design type trailers due to non availability of the existing tail light lens.

Note:

1. NSN and Designation used in this instruction were current at the date of issue. If twelve months or more have expired since issue, the NSN should be checked for supersession.

General

2. Estimated Manhours to Perform. 1.0 (initial planning only).
3. Priority. Group 2. Modification is only to be carried out when the existing tail light lens requires replacement.
4. Modification to be Applied to. All subject trailers fitted with the early design single stop-tail light assembly.
5. Items Affected. Stop-tail light assembly.
6. Action Required. By RAEME workshops authorized to carry out unit, field and base repairs in accordance with WKSP A 850.

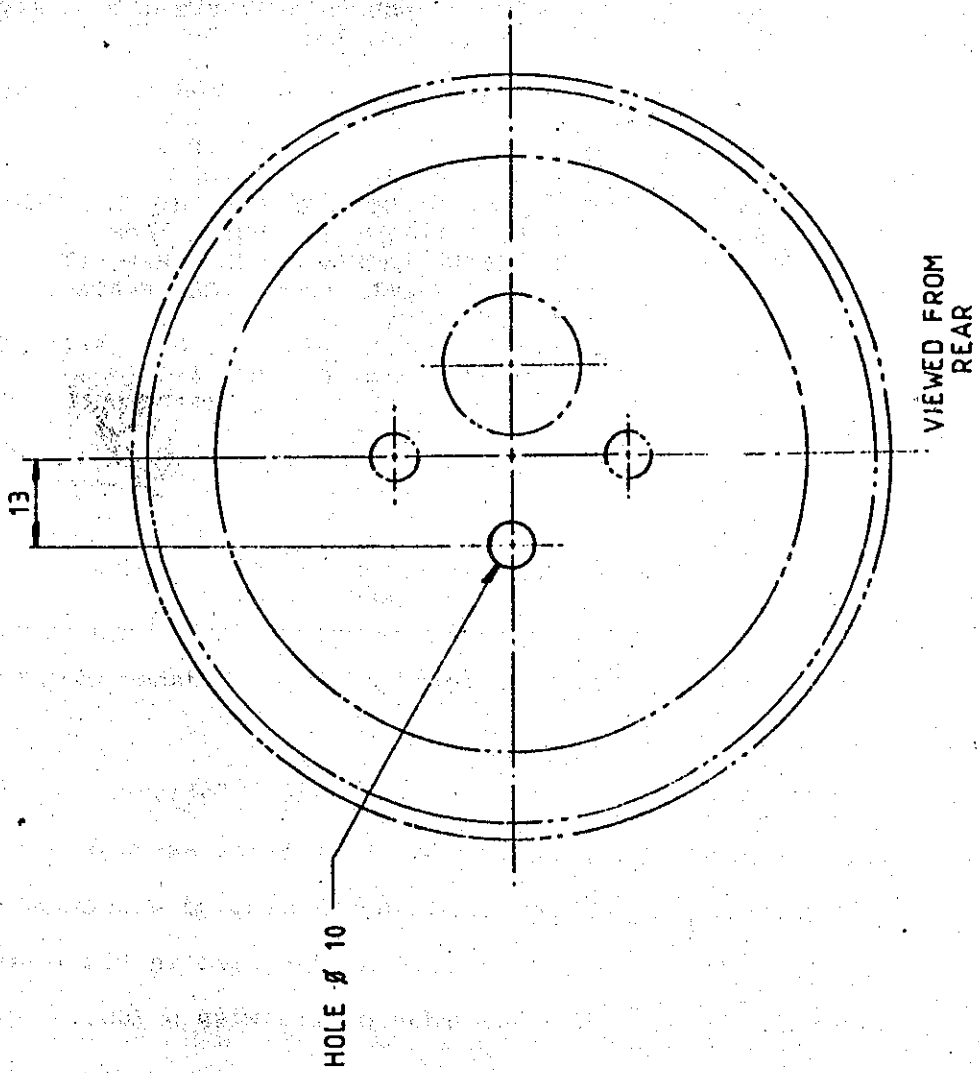
TABLE 1 - STORES REQUIRED (To be demanded through normal supply channels)

Item	NSN	Designation	Qty per Equip
1.	6220-66-090-7823	STOP LIGHT - TAIL LIGHT VEHICULAR	1
2.	6145-66-018-3950	WIRE ELECTRICAL WHITE 3 MM	As required
3.	5305-66-014-9350	SCREW, MACHINE, BSF, FREE FIT, MILD STEEL, RD HD, CAD PLATED, 1/4 IN BY 3/4 IN LG	2
4.	5310-66-015-5094	NUT, PLAIN, HEXAGON, BSF, FREE FIT, STEEL, ZINC COATED, 1/4 IN	2
5.	5310-66-012-6847	WASHER, FLAT, RD, STEEL, ZINC COATED, 1/4 IN BOLT SIZE	2
6.	5310-66-013-0067	WASHER, LOCK, SPRING, STEEL, SINGLE TURN, CAD PLATED, 1/4 IN BOLT SIZE	2
7.	6240-66-014-8509	LAMP INCANDESCENT, 12V, 5W, 'CYL' SHAPE, CLEAR	1
8.	6240-66-027-7458	LAMP INCANDESCENT, 12V, 18W, 'CYL' SHAPE, CLEAR	1

7. Stores Removed. To be disposed of in accordance with GEN P series.

Detail

8. To carry out the modification proceed as follows:
  - a. Disconnect the wiring to the tail light assembly.
  - b. Remove the existing tail light and shroud assembly.
  - c. Modify the tail light shroud as detailed in Fig 1 and shown in Fig 2 and 3.
  - d. Paint the shroud in accordance with WKSP B 700.

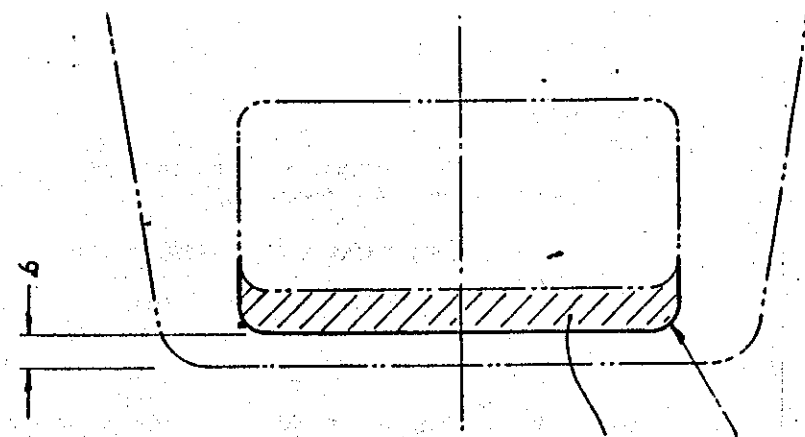


NEW WORK IN FULL LINE  
EXISTING WORK IN CHAIN LINE

DIMENSIONS ARE IN mm

REMOVE SHADED  
AREA

Ø RAD



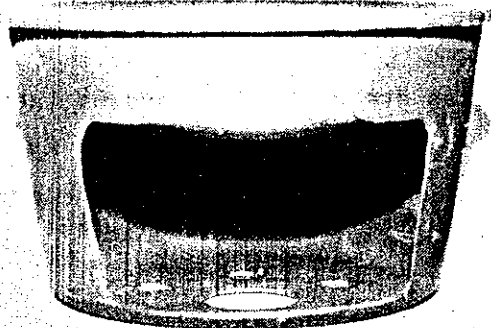


FIG 2 - MODIFIED TAIL LIGHT SHROUD

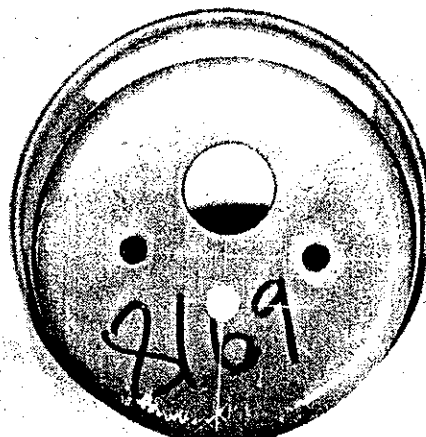
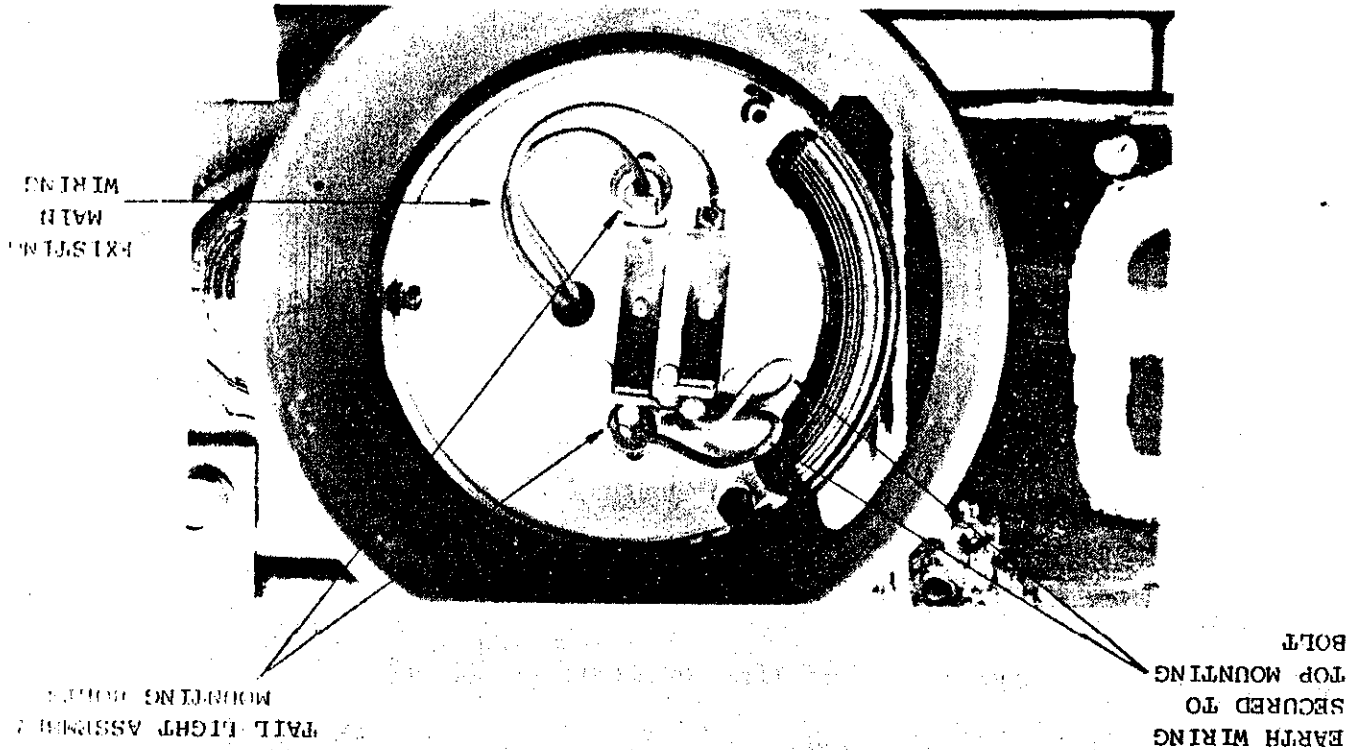


FIG 3 - BASE OF MODIFIED TAIL LIGHT SHROUD

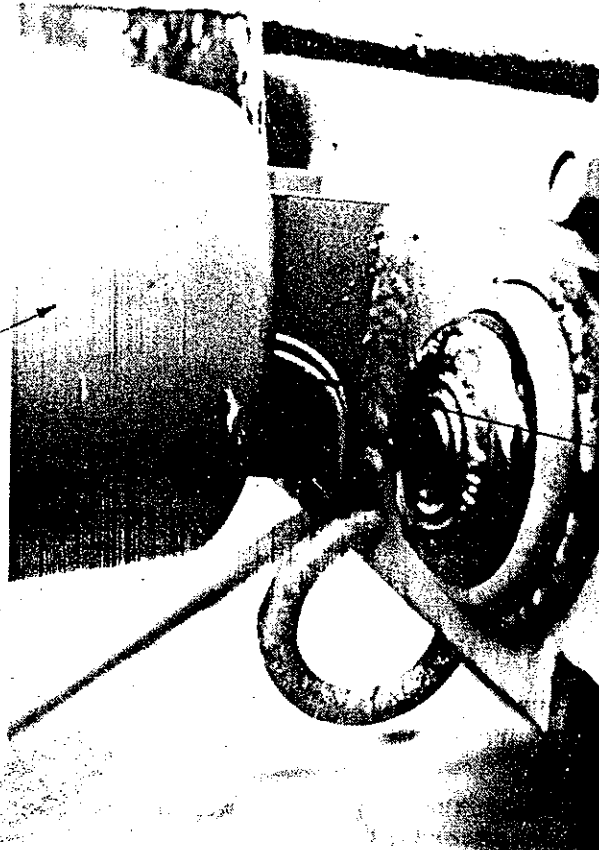
- e. Disassemble the new stop-tail light assembly (item 1 Table 1) and correctly fit the lower section of the light into the modified shroud.
- f. Using the shroud as a template, mark and drill the two existing shroud mounting bolt holes in the base of the tail light lower section.
- g. Remove the grommet from the lower section and insert it into the 10 mm hole drilled in the base of the shroud.

FIG 4 - LOWER SECTION OF TAIL LIGHT AND SHROUD SECURED TO TRAILER



- h. Using item 2 from Table 1 and suitable crimp terminals:
  - (1) manufacture the two earth wires as shown in Fig 4, and
  - (2) if necessary, lengthen the existing stop-tail light wires to enable wiring of the new type tail light.
- i. Fit the lower section of the tail light into the shroud and using items 3, 4, 5 and 6 from Table 1, secure to the existing mounting bracket ensuring that:
  - (1) the two earth wires are secured to one of the mounting bolts as shown in Fig 4, and
  - (2) the tail light wiring is passed around the outside of the mounting bracket and through the grommet in the base of the shroud as shown in Fig 4 and 5.
- j. Seal around the mounting bolt holes with a suitable sealant to prevent water entry.

TAIL LIGHT  
SHROUD



TAIL LIGHT WIRING  
PASSING AROUND  
THE OUTSIDE OF  
THE MOUNTING  
BRACKET AND  
THROUGH THE  
GROMMET IN THE  
SHROUD BASE

FIG 5 - TAIL LIGHT SHROUD SECURED TO TRAILER

- k. Fit the festoon bulbs (items 7 and 8, Table 1) to the tail light assembly.
- l. Connect all wiring to the tail light as shown in Fig 4 ensuring that correct circuitry is maintained.
- m. Test the tail light and stop light for correct operation.
- n. Fit the seal and lens as shown in Fig 6 and 7.

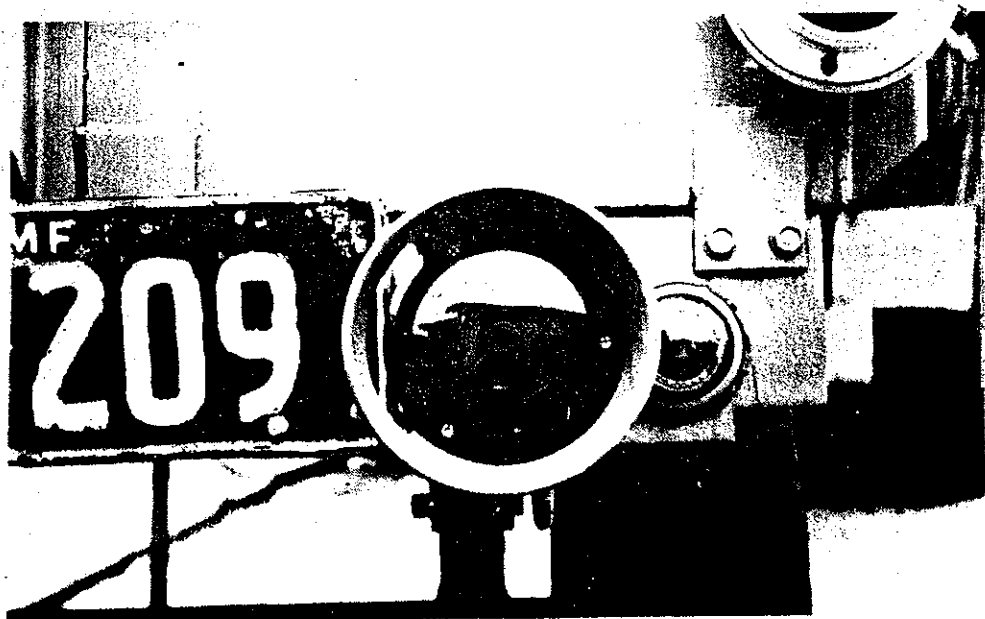


FIG 6 - REPLACEMENT STOP-TAIL LIGHT ASSEMBLY

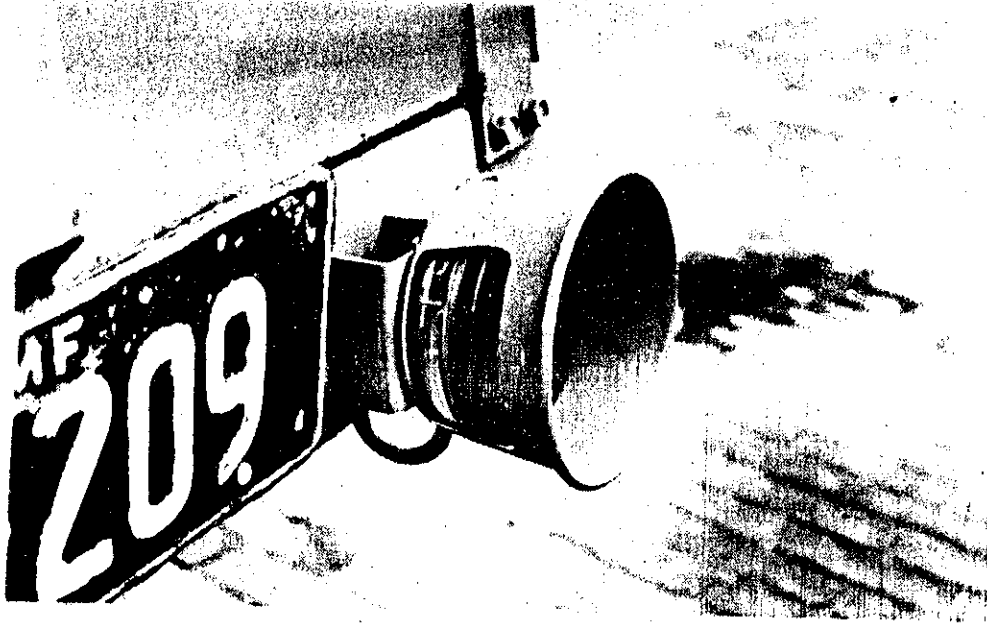


FIG 7 - REPLACEMENT STOP-TAIL LIGHT ASSEMBLY AND MODIFIED SHROUD SECURED TO TRAILER

8. Modification Record Plate. On completion of the modification deface the numeral 6 on the modification record plate. Enter the details of this modification in Part 3 of the Vehicle Record Book for Service Equipment TGM 120.

E N D